



# Ripponden J&I News

## April 2026

Dear Parents/Carers,

Hello and welcome to our newsletter which will now be issued MONTHLY!

We know how busy you all are and reading our newsletter may just seem like another thing on the “to-do” list! With that in mind we are slightly changing the focus of how we communicate the important stuff as well as sharing the good stuff that goes on all the time. Newsletters will now contain a round-up of the main school events plus important information and reminders. We are publishing “Coming up this week and next...” every week on Class Dojo and class teachers are sharing more about our day to day life in classes on there too. Make sure you check the app regularly to see what is going on!

If you would like to get in touch about anything then please drop in at reception or email the office at: [office@ripponden.calderdale.sch.uk](mailto:office@ripponden.calderdale.sch.uk) who will forward your message on. You may also be able to catch me in the playground at pick up or drop off times.

A handwritten signature in purple ink that reads "Jude Kemp".

Headteacher (Interim)

### **Important information about the gates at drop off time.**

We operate a “soft start” at the beginning of the day which means that our gates are opened to allow children to arrive within a short time frame, rather than all at once. The start of the school day for KS1/KS2 is **8.45am** and lessons/learning does start at this time. If you arrive after this time then your child is losing vital opportunities to learn, especially when you factor in the time it takes for children to walk across the playground and put their things away in lockers, before even getting to the classroom. Since January I have been a little bit generous with the time I have allowed the gates to stay open and we are finding that this is having a detrimental impact on a quick and efficient start to learning. With this in mind please be aware that from Tuesday 5<sup>th</sup> May the following times will be adhered to:

8.40am – gates will be opened to allow entry to school (just the Greenacres gate until further notice).

**8.45am – gates will be closed and lessons begin.** All children should be in school by this time unless there are exceptional circumstances (we know that things happen occasionally!)

**We hope you will support us in helping to get children into classes on time so that learning can begin for everyone.**

Thank you.

## Attendance

We know how much you value your child's education and the wider experiences they get from being a part of the Ripponden J&I school community. This is shown by the fact that attendance at Ripponden is very good and we would like to thank you all for everything you do in making sure that your child comes to school every day. We want to support you with this as much as possible.

Mrs Jo Lomas is our Attendance Lead and monitors attendance weekly in line with our Attendance Policy. She will be in touch with you if our monitoring shows that attendance is becoming a matter of concern. Some of you may have been surprised recently to receive emails from us highlighting this. We are not doing this to be judgemental or punitive but simply because we want all our children to have the best possible life chances. Research shows that pupils with higher attendance have better outcomes. National data shows that at KS2 pupils who **did not meet** the expected standard had an overall attendance rate of 95.3% (4.7% or almost 9 days absence in the year) compared with a 96.5% attendance rate overall (3.5% or 6.7 days absence in the year) for those **who did meet** the expected standard.

Collaboration between school and families is the best approach and we will always offer support and work with you to create plans to help improve levels of attendance. However we must point out that the statutory duties of the Education Welfare Officer will always be followed.

Thank you for your continued understanding and support with this.

## Headteacher Recruitment

As you all know I have been in post as the Interim Headteacher since Mrs Bamforth's departure at Christmas. I am thoroughly enjoying the challenge and feel like this transition period has gone as smoothly as possible. This is mainly down to the staff, children and families who have been supportive all the way through. Thank you to everyone!

Whether I continue in the role of Headteacher beyond the end of the school year is yet to be seen. The time has come to recruit for the permanent position starting in September 2026 and the Governors have put in place a rigorous and fair process (supported by the Local Authority and our HR advisors) to ensure we get the best possible Headteacher for our school. This process of applications, shortlisting and interviewing has been given an ambitiously short turn-around time and we intend to be able to advise you all before half term about who the Headteacher for September will be.

If you have any questions about the recruitment process or Headteacher role then please email the office who will pass your query to Dr Sarah Fox (Chair of Governors) or Sue Rosborough (Vice-Chair). I will only be able to answer informal questions and am not allowed to know any details other than what is issued to other potential candidates.

**Parking** Please be mindful where you park before and after school. Do not park in parking spaces which are marked for Greenacres Residents only. Parking here causes disruption and inconvenience to our neighbours. We would also ask that you do not park in the cross-hatched areas as these are marked to allow access for emergency vehicles.

During after school events, such as The Musical Soiree on 21<sup>st</sup> May, we will open the school playground to provide additional parking spaces.

# RIPPONDEN CHILDREN'S DAY 2026

Be part of the magic

Ripponden Children's Day has been a firm favourite of our village for over 50 years!

Join us for another **unforgettable day** at Ripponden Children's Day 2026!

**Date:** Saturday 20 June 2026

**Location:** Mill Fold Park, Ripponden

From **cheering crowds** to **thrilling races** and **fantastic prizes** to **tasty food**, there's something for everyone at this full village celebration.

## Highlights

- **Children and Parent & Child Races:** Join in on the fun and race to win!
- **Local Primary Schools Competing:** The winning primary school wins a trophy and £100 for their school to spend on sports equipment
- **BBQ & Refreshments:** Delicious treats for everyone!
- **Community Spirit:** Experience the joy of coming together.

## Get Involved

Being part of Ripponden Children's Day is not just about attending; it's about active involvement and making an impact! Here's how you can contribute:

- **Volunteer:** Lend a hand on the day.
- **Join the Committee:** Help in the lead-up and planning stages.
- **Donate Raffle Prizes:** Your contributions make the day magical!

## Contact Us

Have questions or ready to get involved? Contact us:

✉ [rippondenchildrensday@outlook.com](mailto:rippondenchildrensday@outlook.com)

[Facebook](#)

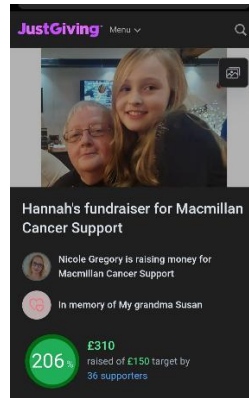
[Instagram](#)

**Be Part of the Community Magic!**

## [Ripponden Children's Day](#)

Steve Dry, a former parent and Governor at our school, recently delivered an assembly to promote Ripponden Children's Day this year. We would love as many of you to take part as possible (we CAN win the trophy!) The yellow entry forms have now been sent home. Please return with all details completed if you would like your family to take part in an event or email the organising committee if you would like to get involved.

## Fund Raising Superstar!



We are so proud of what Hannah in Y6 set out to achieve in the Easter holidays. She epitomises all our Branch Out Values! Well done Hannah!

Here is her mum's explanation of what she did:

On Sunday 29<sup>th</sup> March, Hannah decided to take on a children's distance triathlon for her age group. She selflessly decided this on her own to raise money for Macmillan Cancer Support. Hannah's grandma, Susan, died at the end of November 2025 after a short battle with cancer and she wanted to raise money to support others going through cancer.

Hannah completed a 250m swim, then a 6k bike ride, followed by a 1.8k run, all without any fuss. Hannah has managed to raise £310!

## PTFA Gala Fund Raising Event



Thank you to everyone who attended, supported or donated!

The PTFA are well on their way to raising their £20,000 target to pay for new playground equipment.

Watch out for further events coming soon!

## Annual Y6 Rotary Quiz Winners!



Quiz report by Ivan Minnis

Last Tuesday, four year 6 students were selected to represent and take part in a quiz organised by the local rotary club.

Ripponden J& I team consisted of : Ivan,Grace,Chloe and Mabel.

There were ten genres covered in the quiz: mathematics,spelling,food and drink ,television, and history were just a few of the genres. The final score was counted leaving a tie between Ripponden J & I and Heathfield primary! One more decider question was asked; How many bones in a giraffe's neck?! Ripponden got the answer correct, leaving Ripponden J&I the overall winners!

An example of some of the quiz questions are;

How many balls are on a newtons cradle ?

On some geographical map the are lines that show elevation gain. What are this lines called?

See if you can answer them good luck!

## Y6 Netball Tournament



Ripponden netball tournament report by Ivan Minnis

Ripponden's school netball team took part in tournament at Ryburn Valley High School, competing against neighbouring schools. Our first game we played Barkisland, which we marginally lost to. Followed by another very unfortunate loss against Rishworth 1st team. However, we all continued to try our best to get back into the game. We soon got back on track, beating St.Johns, Triangle and Rishworth 2nd team. Overall finishing up in 2nd place of the tournament!

## Boys Football Match

Football report by Ivan Minnis

On Thursday, Ripponden boys football team played against St Mary's. Ripponden quickly found themselves in an early lead with the score of 1-0. A couple of minutes later, Ripponden was faced with an equalising goal, making the score 1-1. Ripponden were hungry to get back into the lead and soon scored again but so did ST Mary's making the score 2 a piece!

This kept happening, we would score and then they would score! Before we knew it, we were 4-4. All 4 goals were scored by Year 5's Theo! With minutes to spare, parents were nail biting! But in the dying seconds of the game, Ivan (Y6) scored a last-minute winner making the score 5-4! What a game!

## Maples Trip to Jorvik and Barley Hall



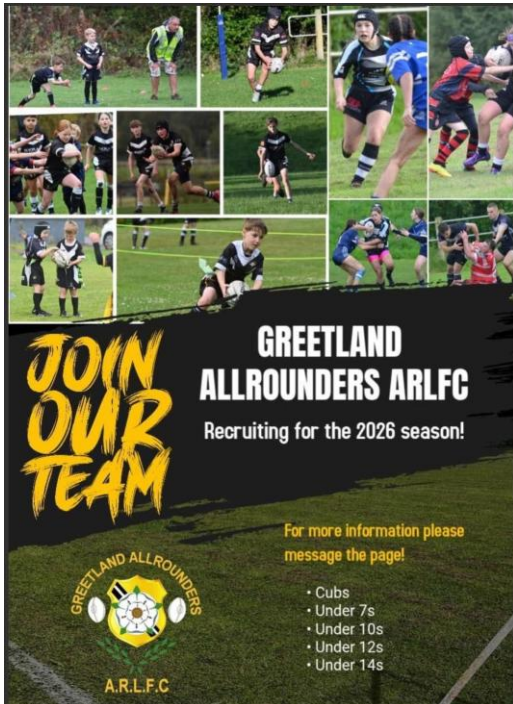
Maples had a great day learning about Vikings and Tudors on their class trip to York last week!

## Deaf Awareness Week

Join us to celebrate Deaf Awareness Week on 4 to 10 May 2026.



For more information see: <https://www.ndcs.org.uk/deaf-awareness-week>



## Rugby Taster Sessions

Little Acorns, Saplings and Great Oaks had a fabulous time having rugby taster sessions with Gav from Greetland Allrounders.

Contact them if your child was inspired to have another go!



### **Diary Dates**

***Lots of dates will be added regularly – keep an eye on the diary dates section! We will add more detail in the coming weeks.***

#### **May 2026**

Fri 1 <sup>st</sup>	KS2 Celebration Assembly – 2.45pm
Mon 4 <sup>th</sup>	Bank Holiday – school closed
Fri 8 <sup>th</sup>	R/KS1 Celebration Assembly – 2.45pm
11 <sup>th</sup> -15 <sup>th</sup>	Y6 SATS week
Fri 15 <sup>th</sup>	KS2 Celebration Assembly – 2.45pm
Tues 19 <sup>th</sup>	Coffee Morning with SENDCo 8.30am - 9.30am
Thurs 21 <sup>st</sup>	Musical Soiree – 6pm-8pm in the school hall
Fri 22 <sup>nd</sup>	R/KS1 Celebration Assembly – 2.45pm
Fri 22 <sup>nd</sup>	School closes for half term
Mon 25 <sup>th</sup> – Fri 29 <sup>th</sup>	Busy Bees open for Holiday Club childcare

## **June 2026**

Fri 5 <sup>th</sup>	KS2 Celebration Assembly – 2.45pm
Mon 8 <sup>th</sup> – Fri 12 <sup>th</sup>	Y6 Residential week
Fri 12 <sup>th</sup>	Rec/KS1 Celebration Assembly – 2.45pm
Tues 16 <sup>th</sup>	Class photos
Tues 16 <sup>th</sup>	Coffee Morning with SENDCo 8.30am - 9.30am
Weds 17 <sup>th</sup>	Parents welcome meeting for September Reception Class – 6pm in the school hall.
Fri 19 <sup>th</sup>	KS2 Celebration Assembly – 2.45pm
Mon 22 <sup>nd</sup> -Fri 26 <sup>th</sup>	Sports week – watch out for dates of class race days
Tues 23 <sup>rd</sup> June	Sports Day – 9.15(ish) tbc
Fri 26 <sup>th</sup>	Rec/KS1 Celebration Assembly – 2.45pm

## **July 2026**

Fri 3 <sup>rd</sup>	Transition Day
Fri 3 <sup>rd</sup>	Clubs finish for summer
Fri 10 <sup>th</sup>	Reports due out
Fri 10 <sup>th</sup>	Dress Down Day for donations for Summer Bonanza
Mon 13 <sup>th</sup>	RockSteady Concert – 9.30
Mon 13 <sup>th</sup>	Summer Bonanza in school (pm) – pupils only
Tues 14 <sup>th</sup>	Coffee Morning with SENDCo 8.30am - 9.30am
Weds 15 <sup>th</sup>	Y6 production (afternoon – time tbc)
Weds 15 <sup>th</sup>	Y6 production (evening – 6pm)
Thurs 16 <sup>th</sup>	End of Year Assemblies (times tbc)
Fri 17 <sup>th</sup>	Y6 Leavers assembly (time tbc)
Fri 17 <sup>th</sup>	School breaks up for summer holidays

**2025/2026 Calendar of main events (see below)**

This is a summary of main events. Please keep looking at the half-termly diary dates section on the newsletter, as they get updated regularly.

	<b>April</b>	<b>May</b>	<b>June</b>	<b>July</b>
1		KS2 Celebration	School reopens	
2				
3				Clubs finish for summer Transition Day
4		<b>BANK HOLIDAY</b>		
5			KS2 Celebration	
6				
7				
8			Redwoods Residential all week	
9				
10				Reports Out
11		Y6 SATs Week		
12			R/KS1 Celebration	
13	School reopens			
14				
15		KS2 Celebration.		Year 6 Production
16			Class photos	
17				School closes for summer
18				
19			KS2 Celebration	
20	Clubs restart			
21				
22		R/KS1 Celebration. Close for half term	Sports Week	
23			Sports Day	
24	R/KS1 Celebration.			
25				
26			R/KS1 Celebration	
27				
28				
29				
30				
31				

